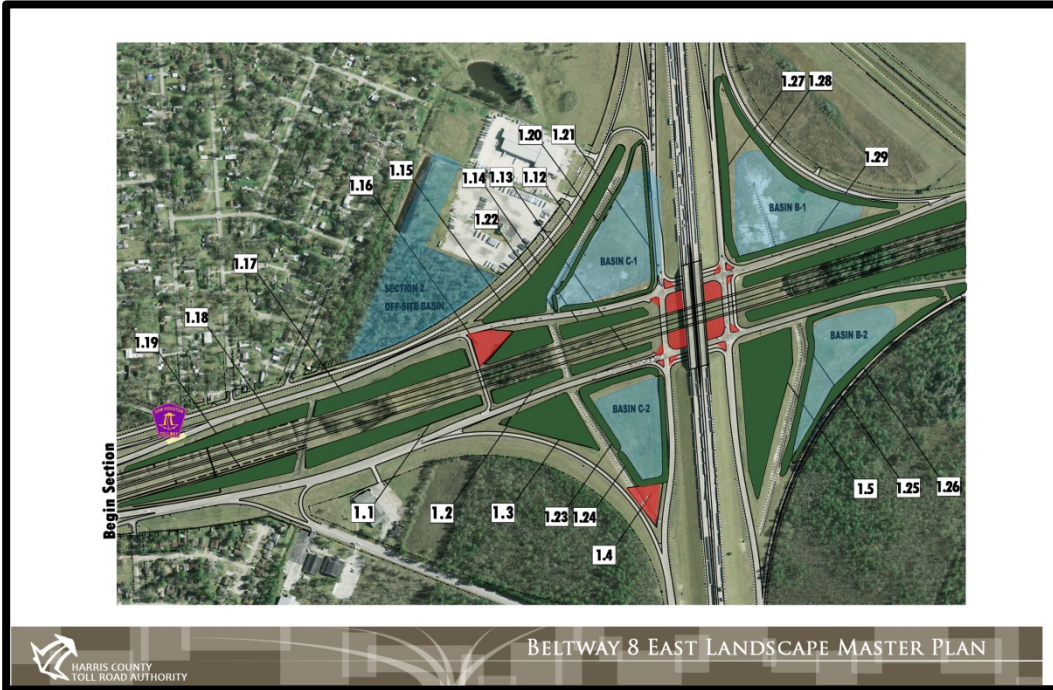




# Sam Houston Tollway Northeast Project



## Project Description

Knudson was engaged by HCTRA to provide landscape architectural services relating to tree planting and storm water quality improvements for the 13.5 mile extension of the Sam Houston Tollway. Knudson began its work by providing a master plan for the proposed planting program. Potential landscaped areas were identified and quantified. To meet the Storm Water Permitting requirements for this project, almost 60 acres of tree planting would be required. After the master planning phase, Knudson focused on developing plans and specifications for this large scale reforestation effort. Plans and specifications were produced using TxDOT standards for the entire corridor. As a result, over 80 acres of native plant materials were installed along the project. Additionally, Knudson provided bid and construction phase services for this project.

### Client:

Harris County Tollroad Authority

### Complete

### Services:

Landscape Architecture

### Principal In Charge:

Patti Joiner

### Project Manager:

Bryan Janhsen

---

### Project Reference

Harris County Tollroad Authority

John Tyler,  
Deputy Director

713-587-7800

7701 Wilshire Place Dr  
Houston, TX 77040