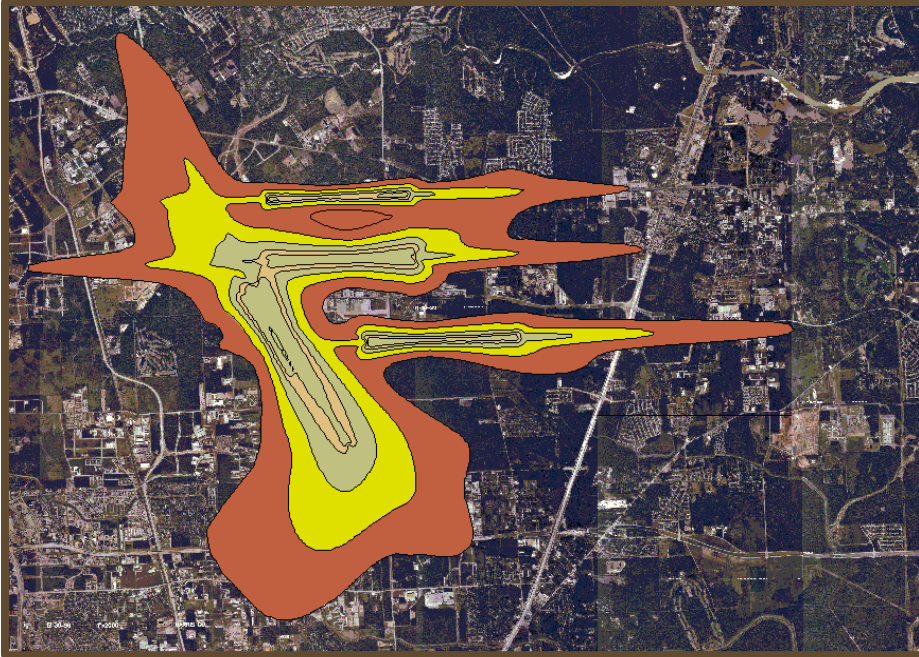




Intercontinental Airport (IAH) EIS for North Runway 8L-26R



Project Description

Knudson was part of the team for this Environmental Impact Study (EIS). The firm's responsibilities included inventory, data collection, analysis and mapping (GIS) of land use, social and economic analysis and environmental justice to evaluate different runway alternatives

Client:
Leigh Fisher Associates

Complete

Services:
Planning / GIS

Principal In Charge:
Patti Joiner

Project Reference

Leigh Fisher Associates

Bill Wilkie
Associated Vice President

650.579.7722

555 Airport Boulevard, Suite 300
Burlingame, CA 94010