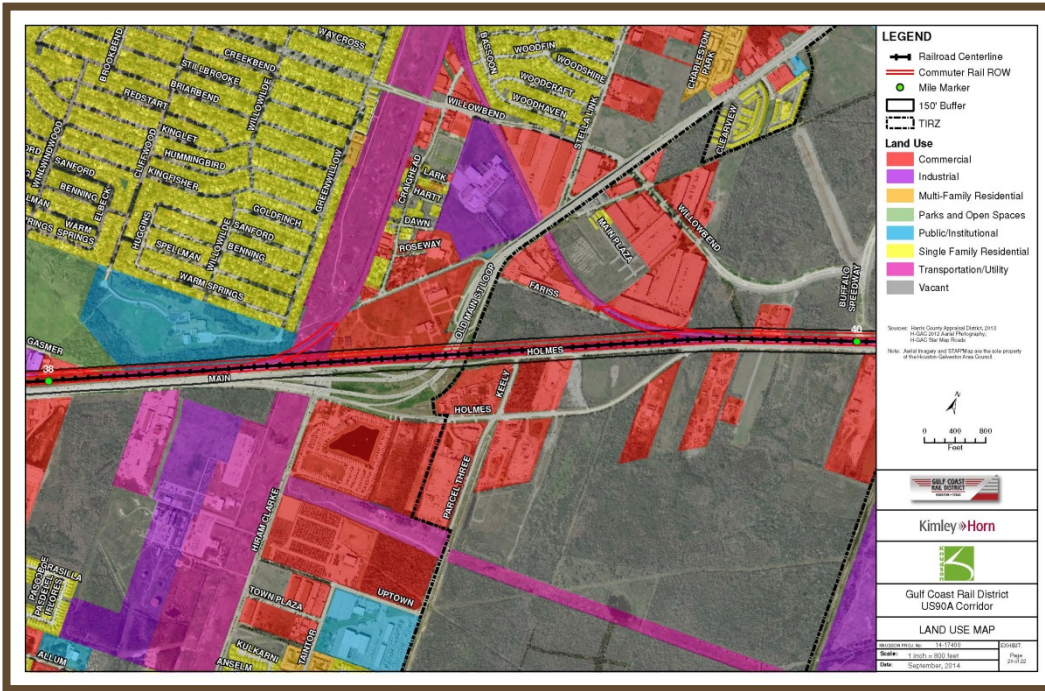




Gulf Coast Rail District (GCRD) Corridor Assessment



Project Description

The Gulf Coast Rail District received a \$2 million grant under the American Recovery and Reinvestment Act for preliminary engineering studies to determine the feasibility of commuter rail in the Houston region. As sub consultant to Kimley-Horn, Knudson evaluated the feasibility of establishing new commuter rail right-of-way (ROW) either adjacent to existing freight rail ROW, within abandoned freight rail ROW, or along highway or other public ROW within the three priority corridors, Hempstead, US-90A, and Westpark.

Knudson was responsible for analyzing corridors adjacent to existing railways to identify land use options that would be beneficial or harmful to the change of land use for a commuter rail line, and preparing appropriate exhibits and tabular summary information identifying the results of the analysis.

Client:

Gulf Coast Rail District

Completed 2014

Services:

Transportation

Principal In Charge:

Patti Joiner

Project Manager:

Angela Martinez

Project Reference

Kimley-Horn and Associates, Inc.

Sam Lott, P.E.,
Sr. Vice President

281.597.9300
sam.lott@kimley-horn.com

12012 Wickchester Lane, Suite 500
Houston, TX 77079